

TEST SQUARE: 10CM x 10CM / 4 INCHES x 4 INCHES



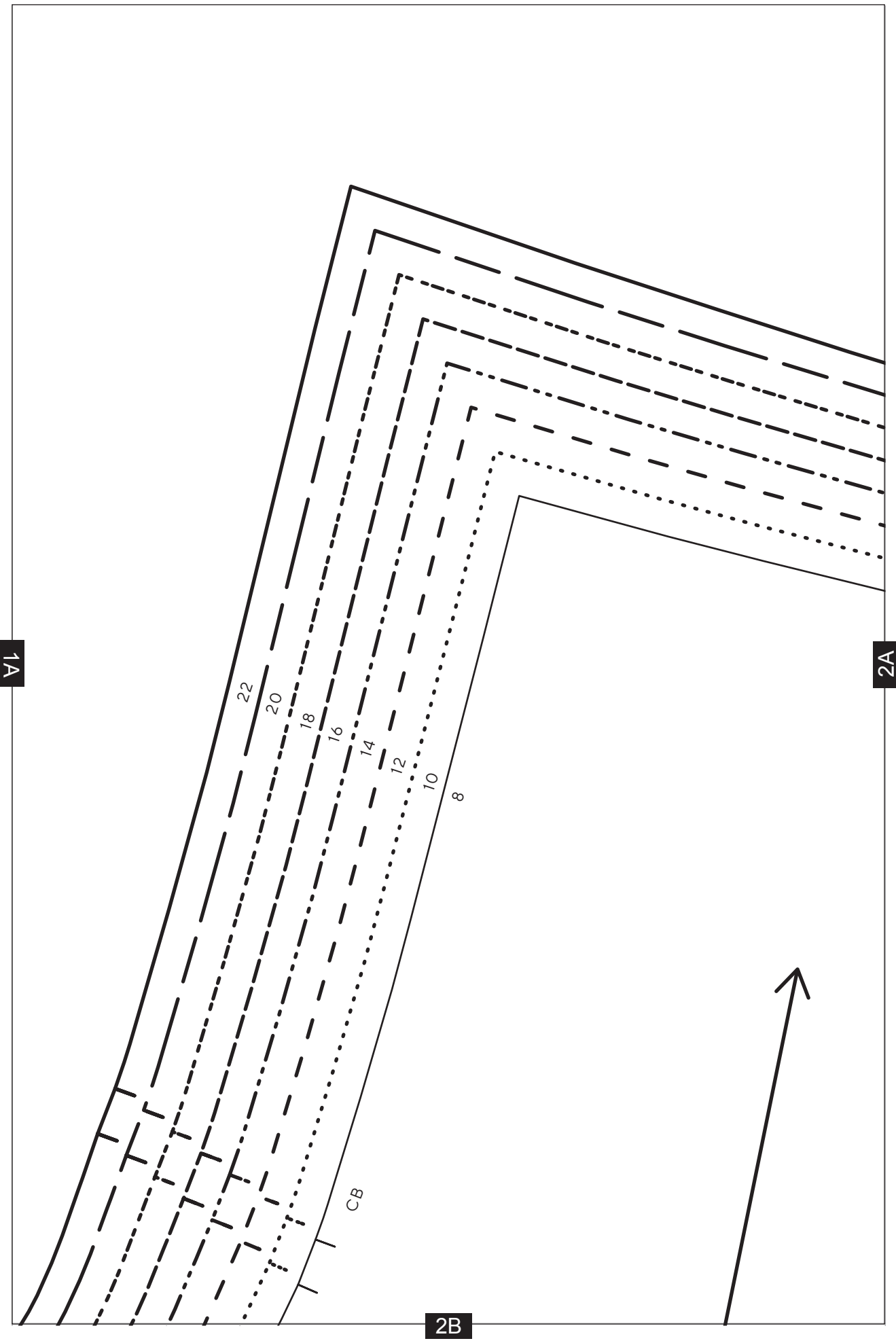
Romper

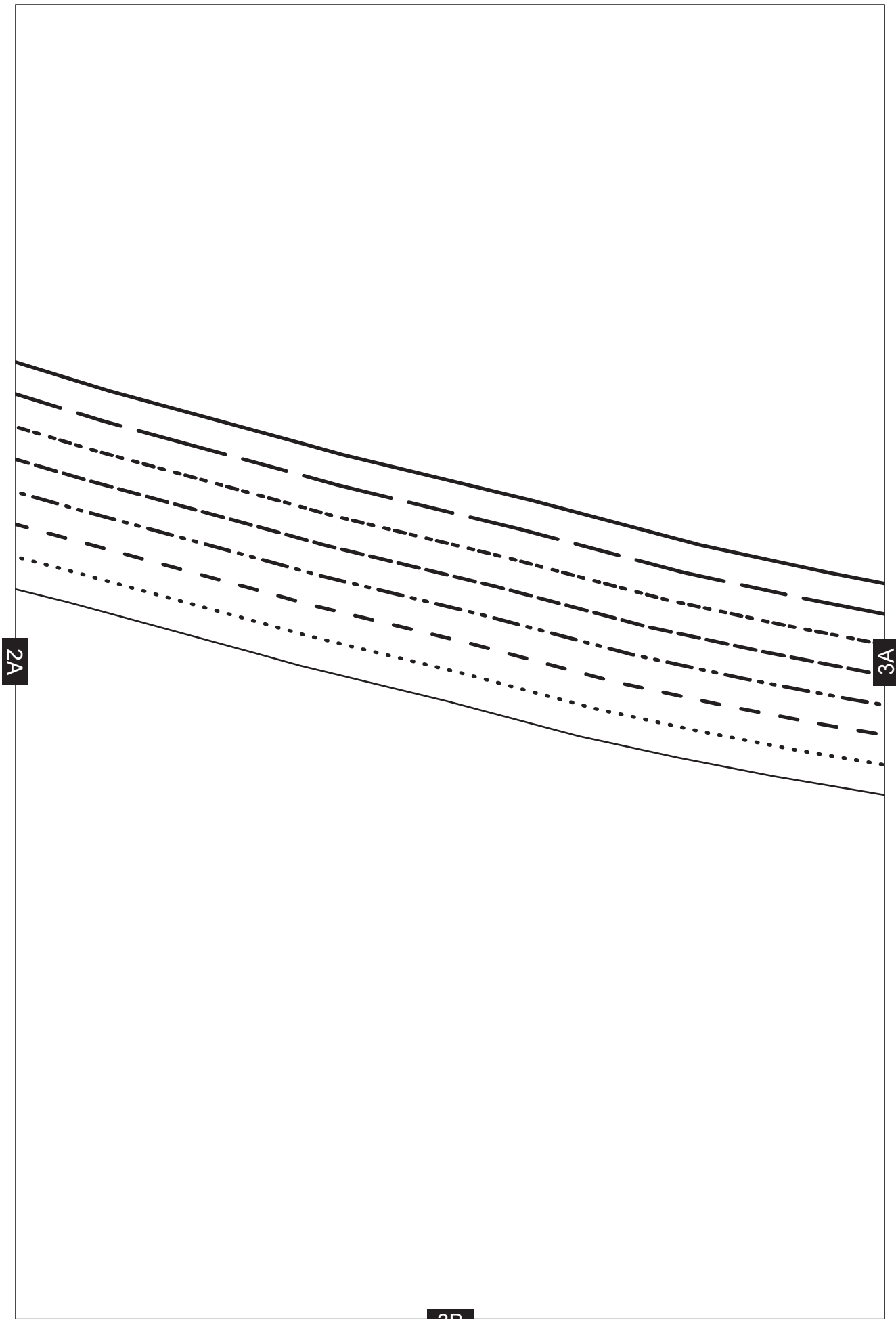
PROJECT DESIGN © LOVE PRODUCTIONS 2020
THIS DESIGN IS PROTECTED BY COPYRIGHT
AND MUST NOT BE MADE FOR RESALE.

1.5 CM (5/8-IN) SEAM ALLOWANCE INCLUDED (UNLESS OTHERWISE STATED)

SIZING KEY

—————	8
.....	10
- - - - -	12
- · - · - ·	14
- - - - -	16
- · - · - ·	18
- - - - -	20
—————	22

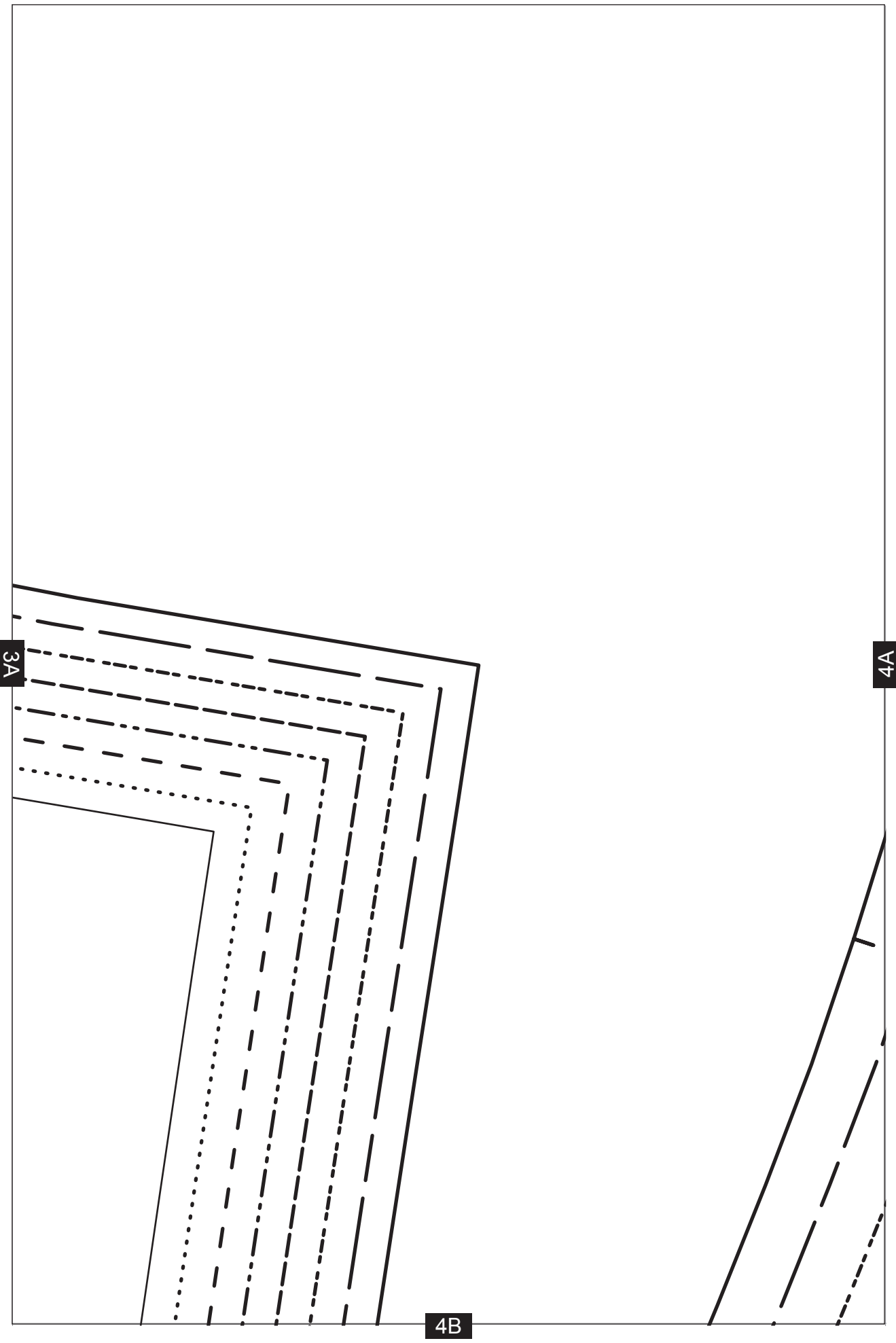




2A

3A

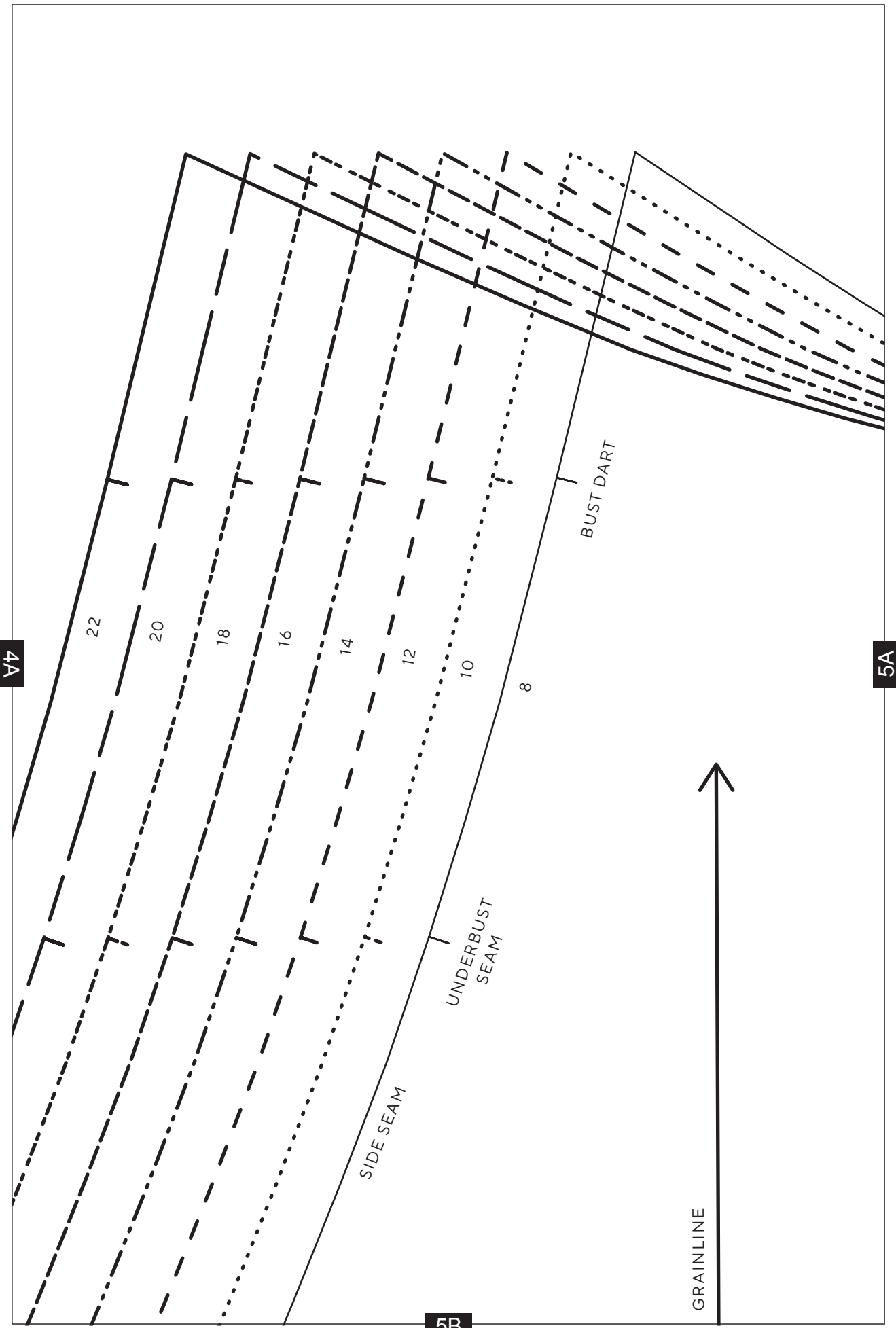
3B



3A

4A

4B



4A

5A

5B

22

20

18

16

14

12

10

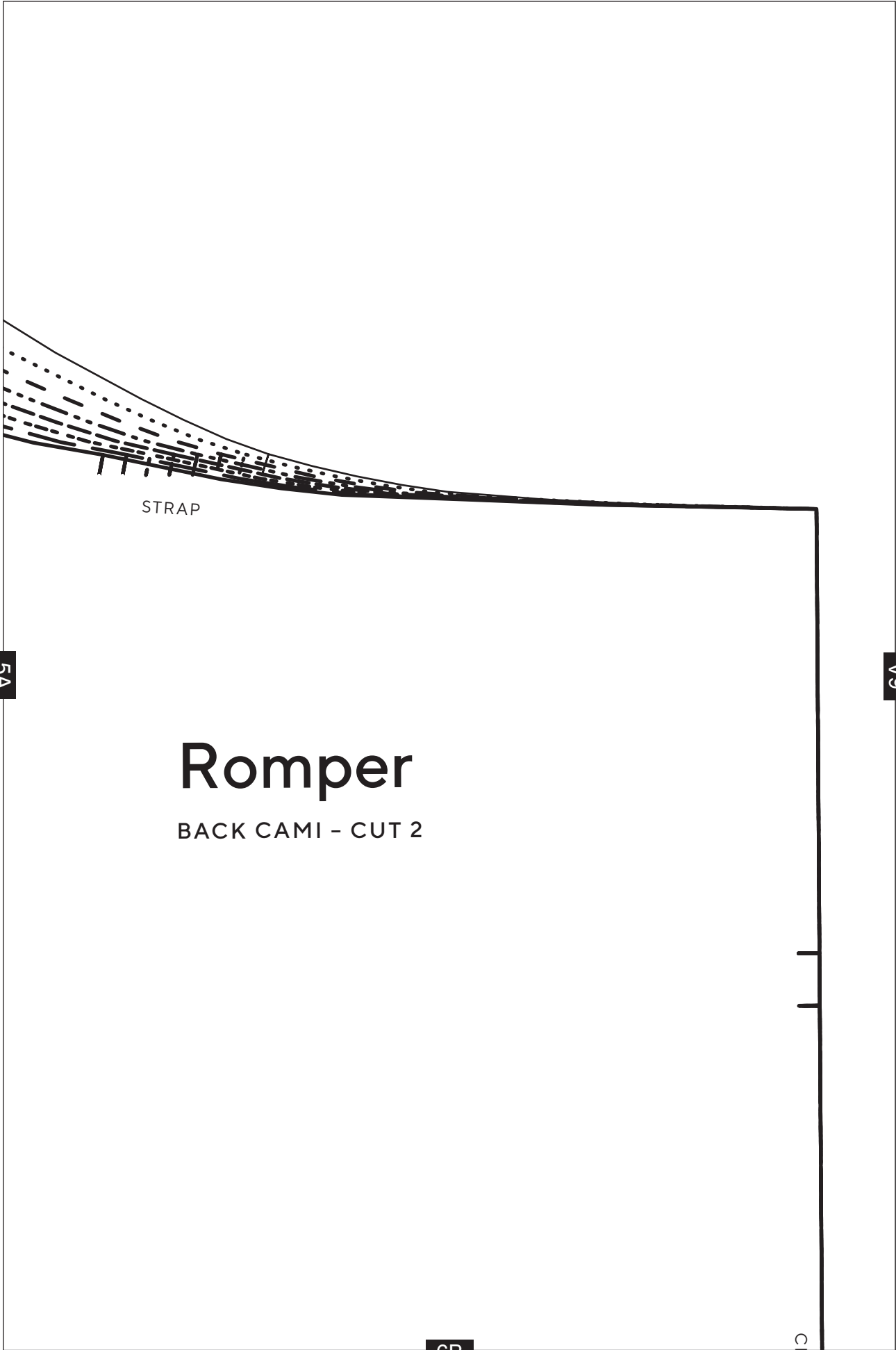
8

SIDE SEAM

UNDERBUST SEAM

BUST DART

GRAINLINE



STRAP

5A

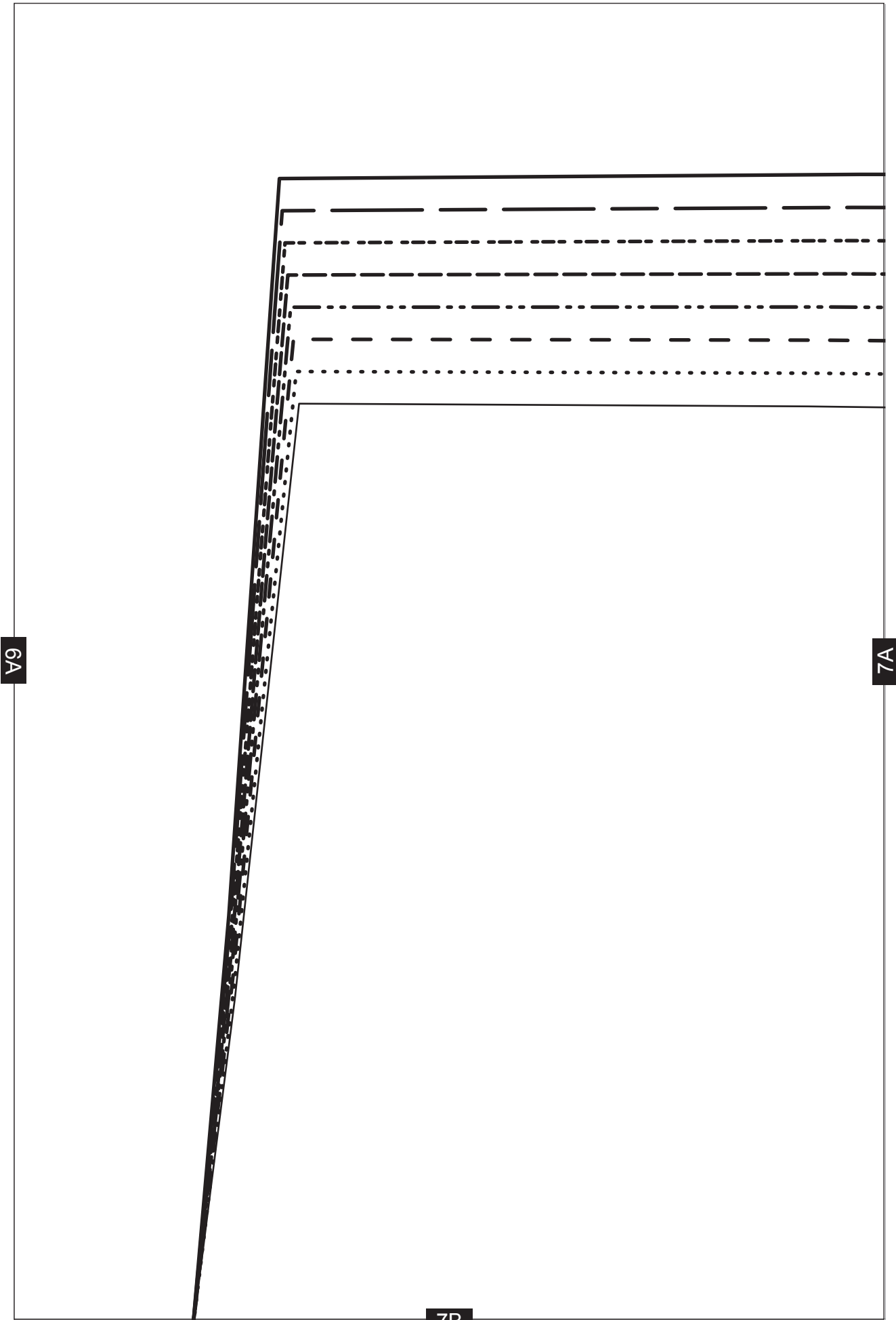
6A

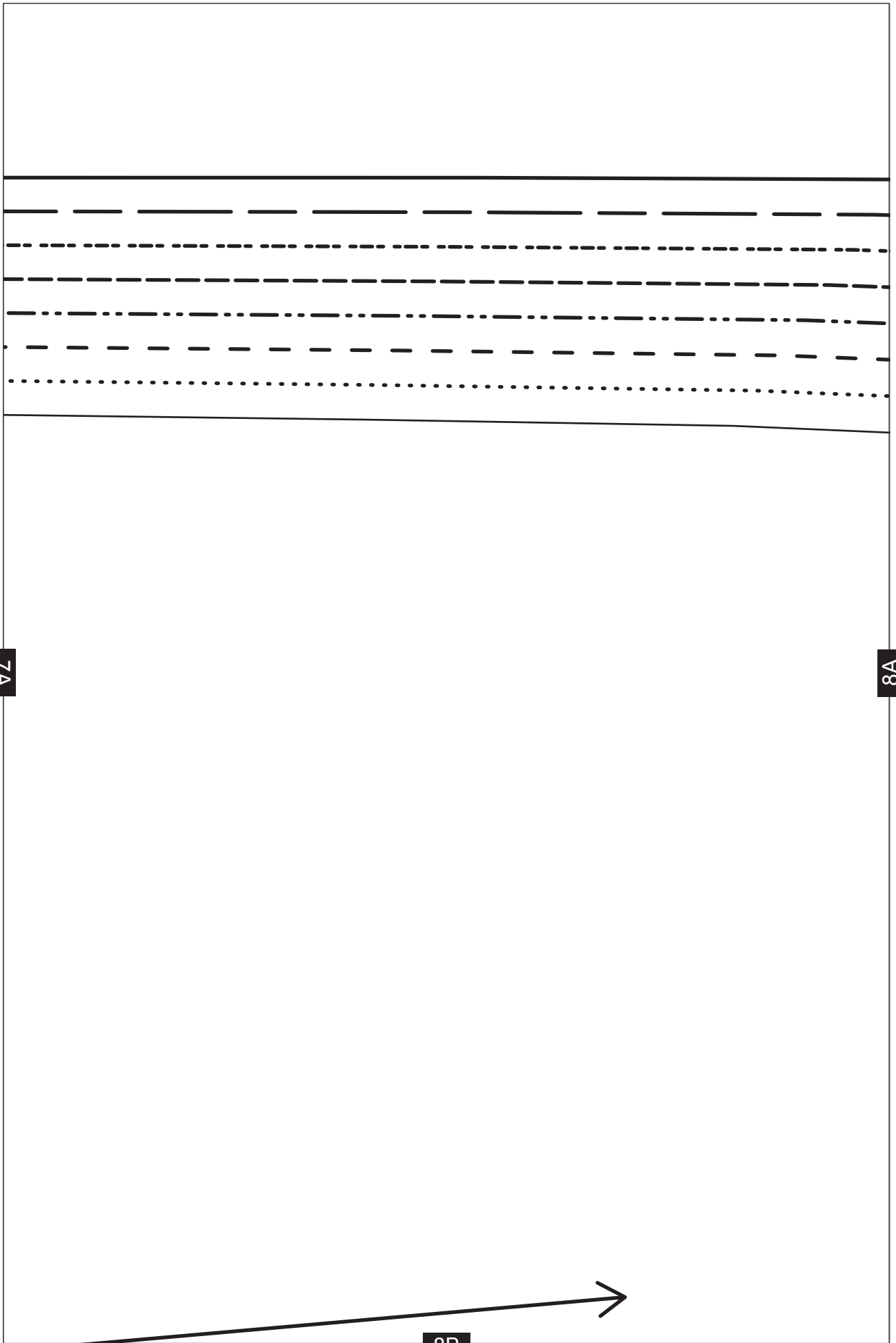
Romper

BACK CAMI - CUT 2

6B

C

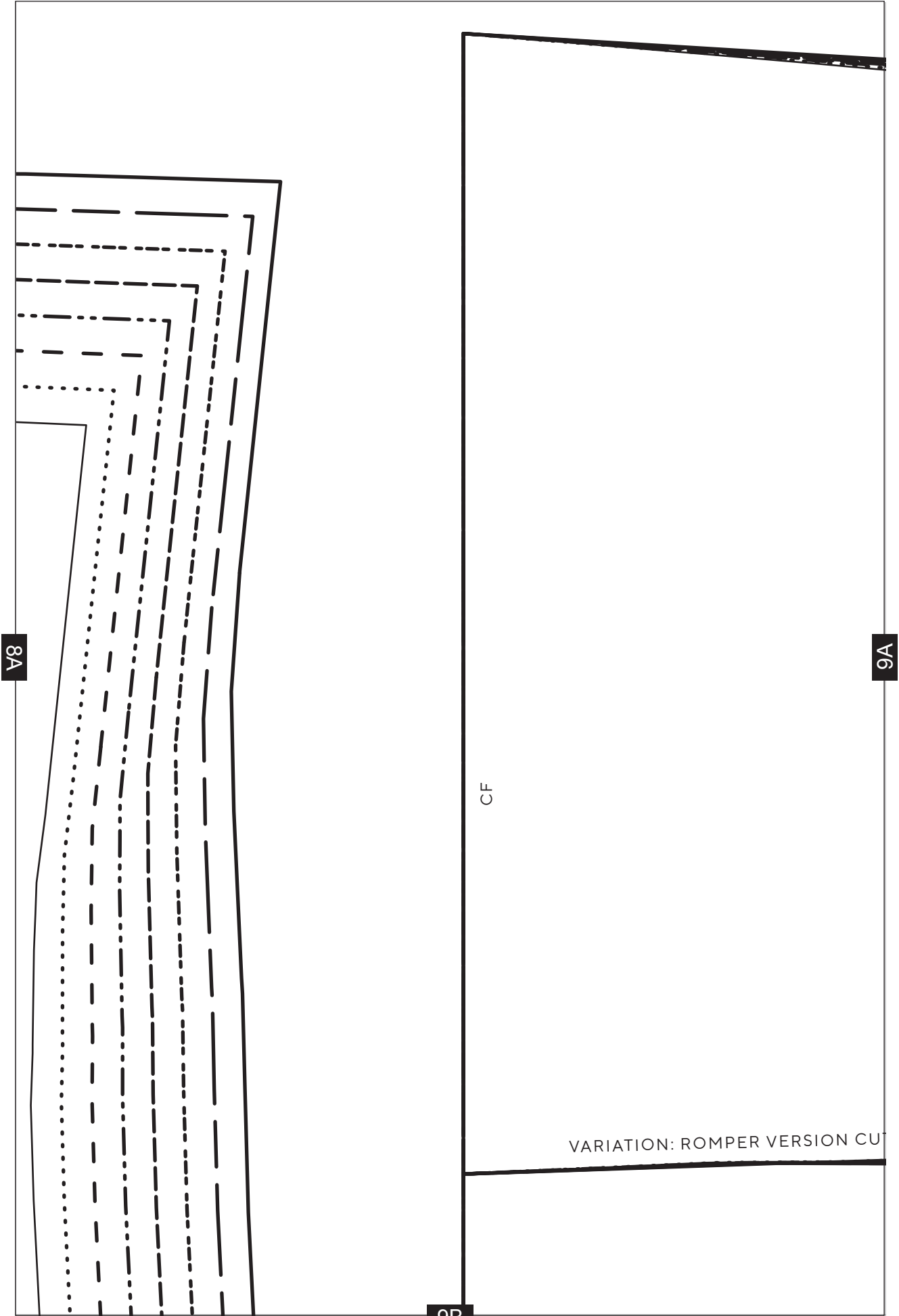




7A

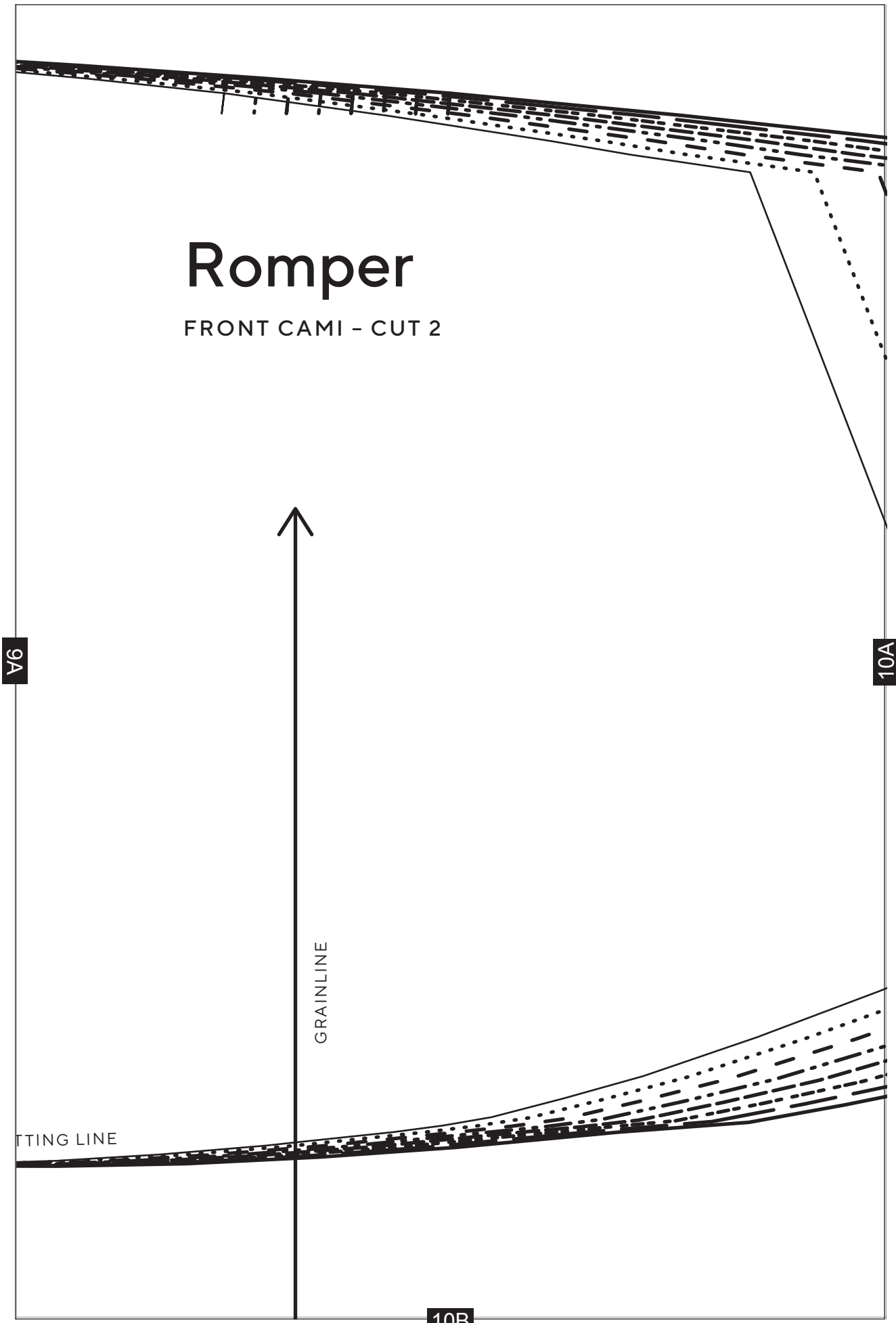
8A

8B



Romper

FRONT CAMI - CUT 2



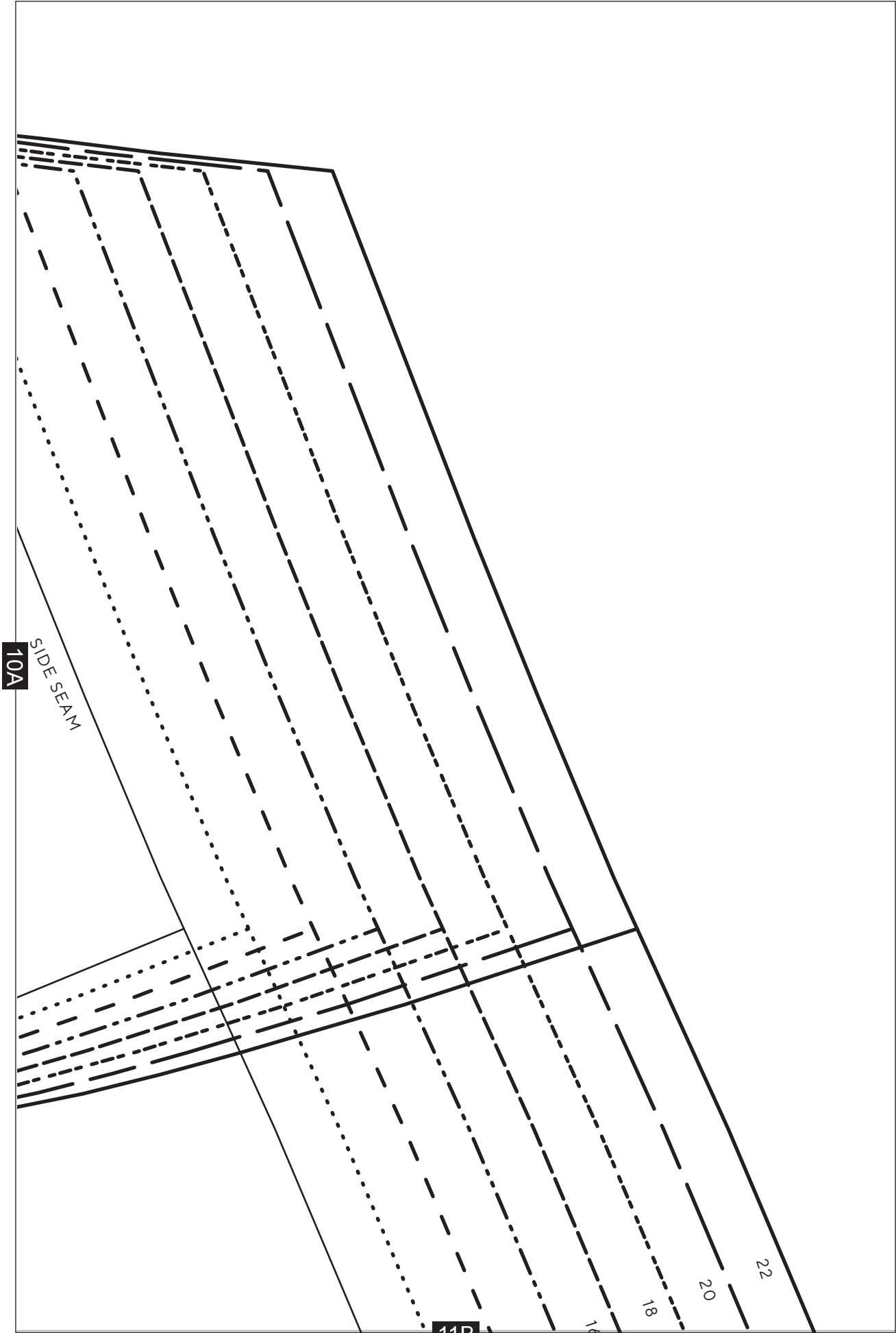
9A

10A

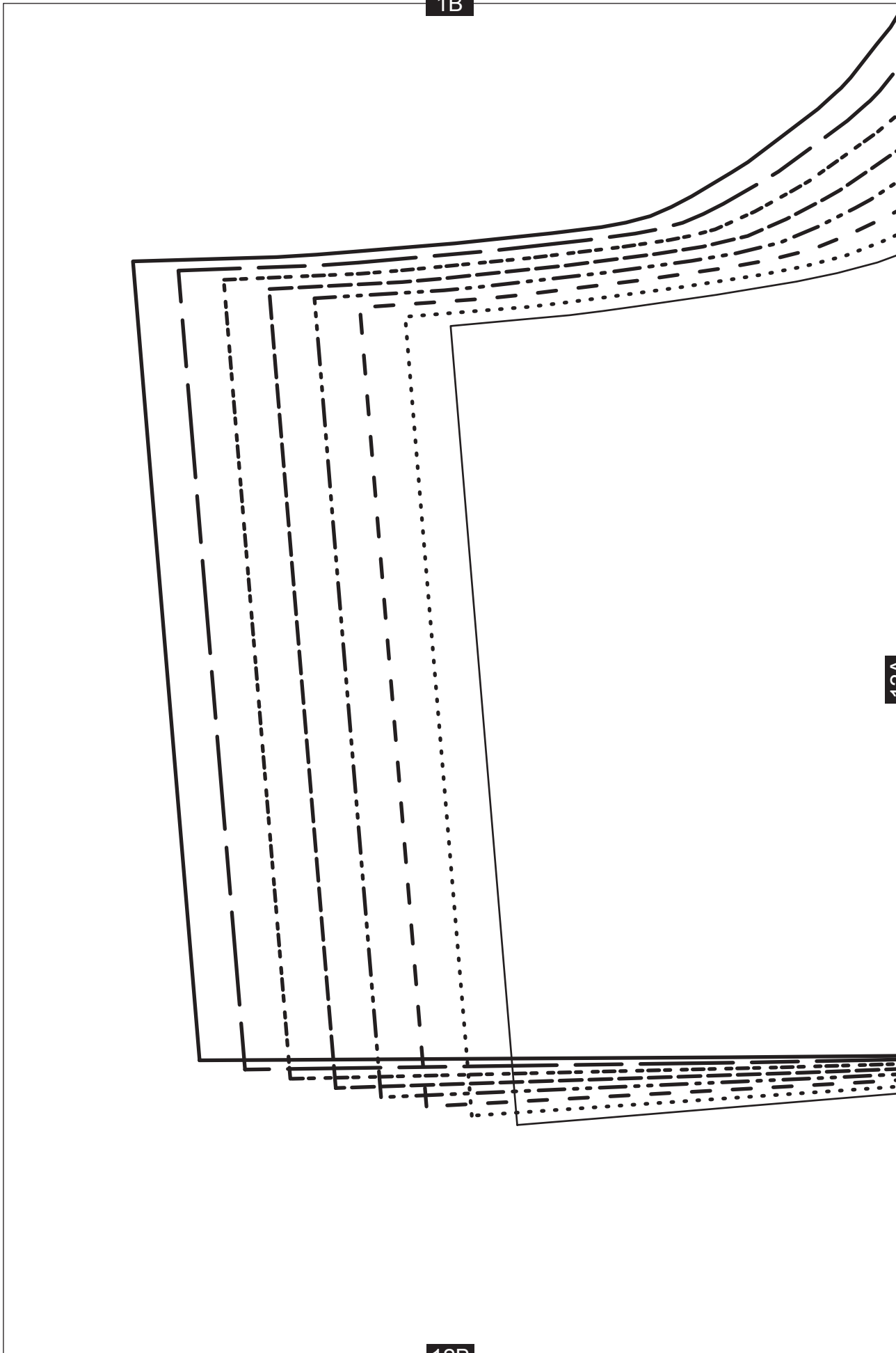
GRAINLINE

CUTTING LINE

10B

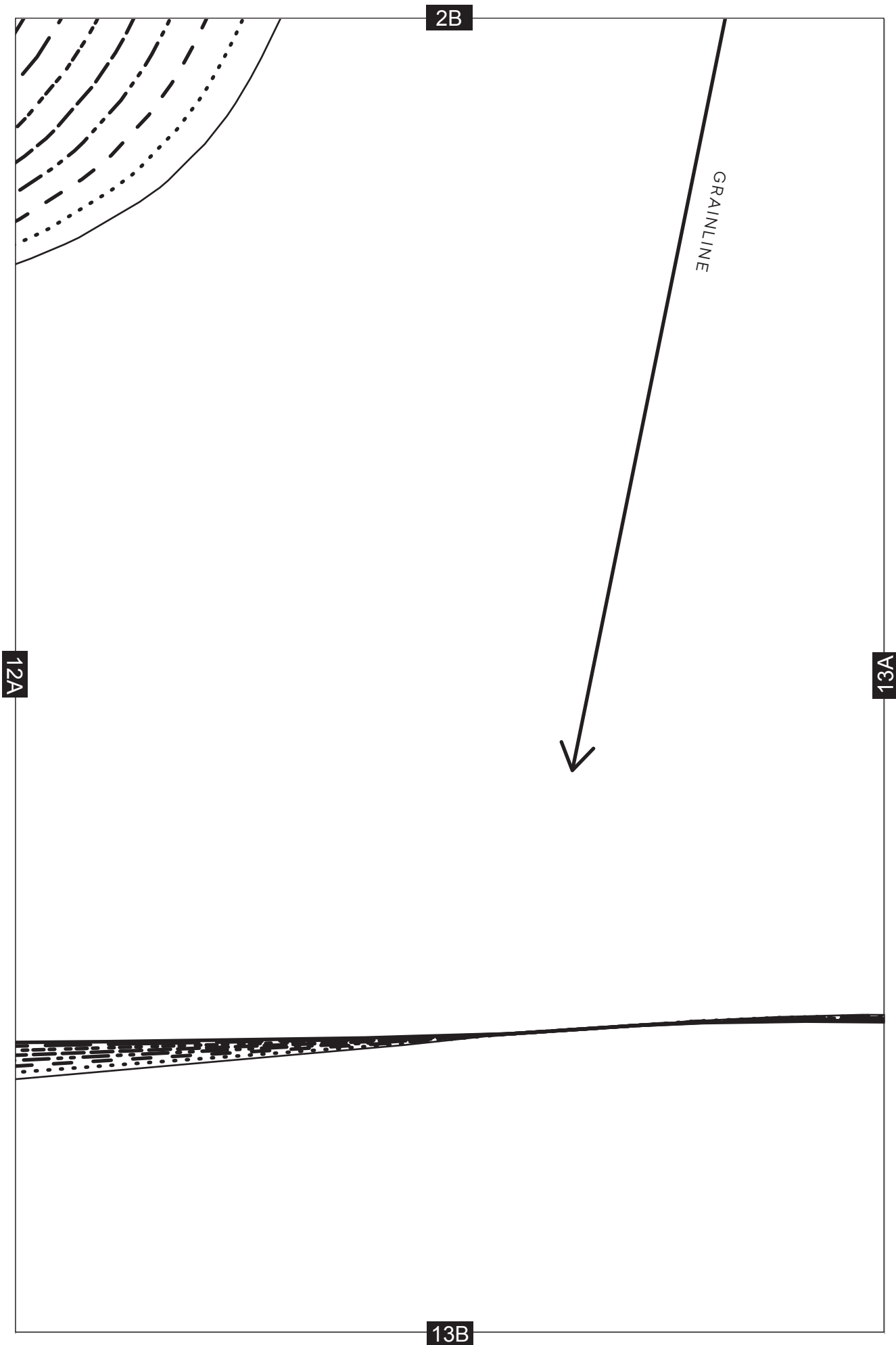


1B



12A

12B



3B

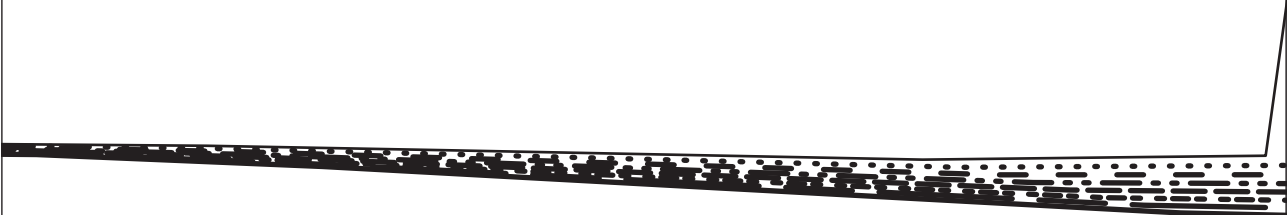
13A

14A

Romper

BACK LEG - CUT 2

14B

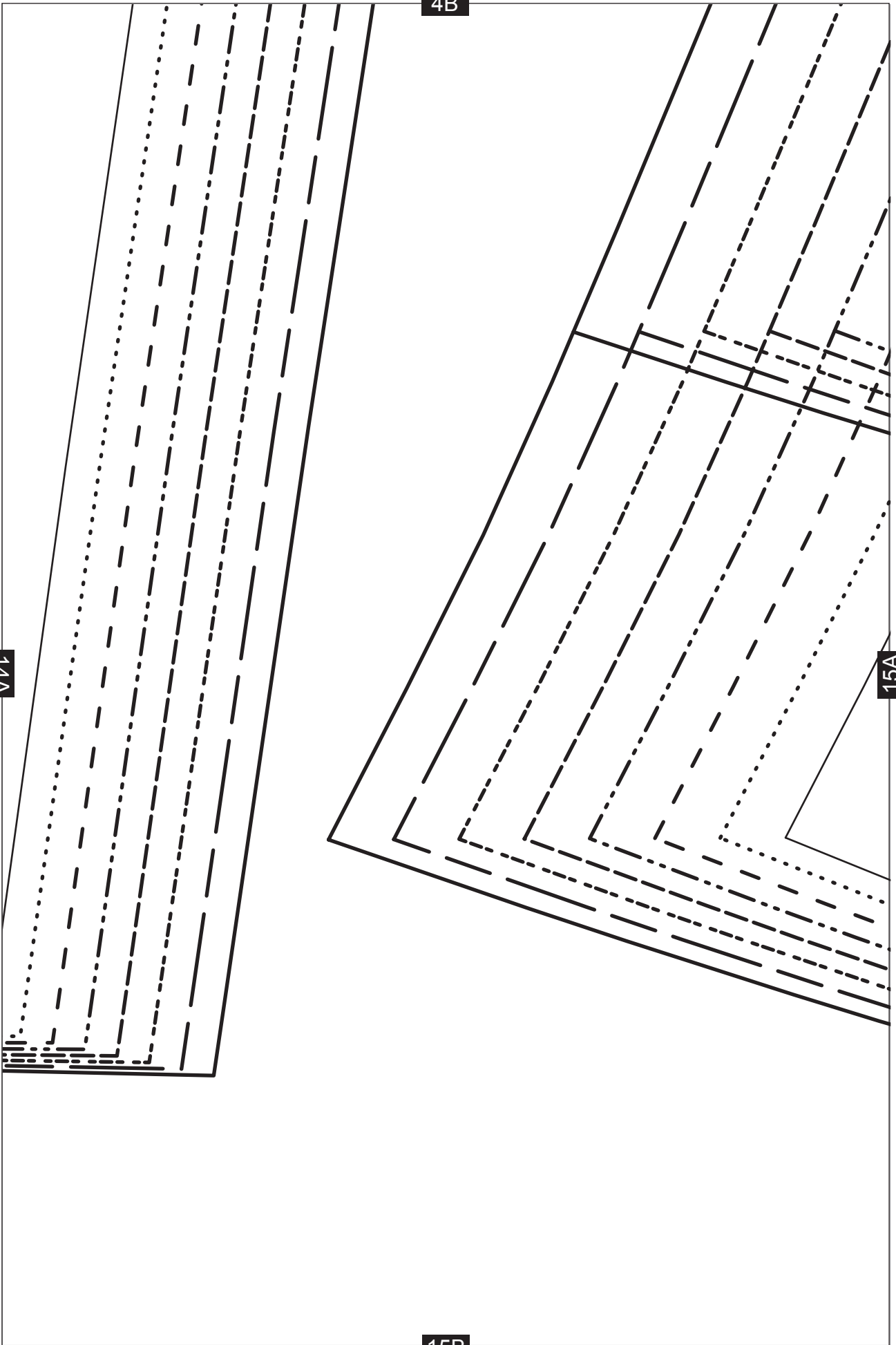


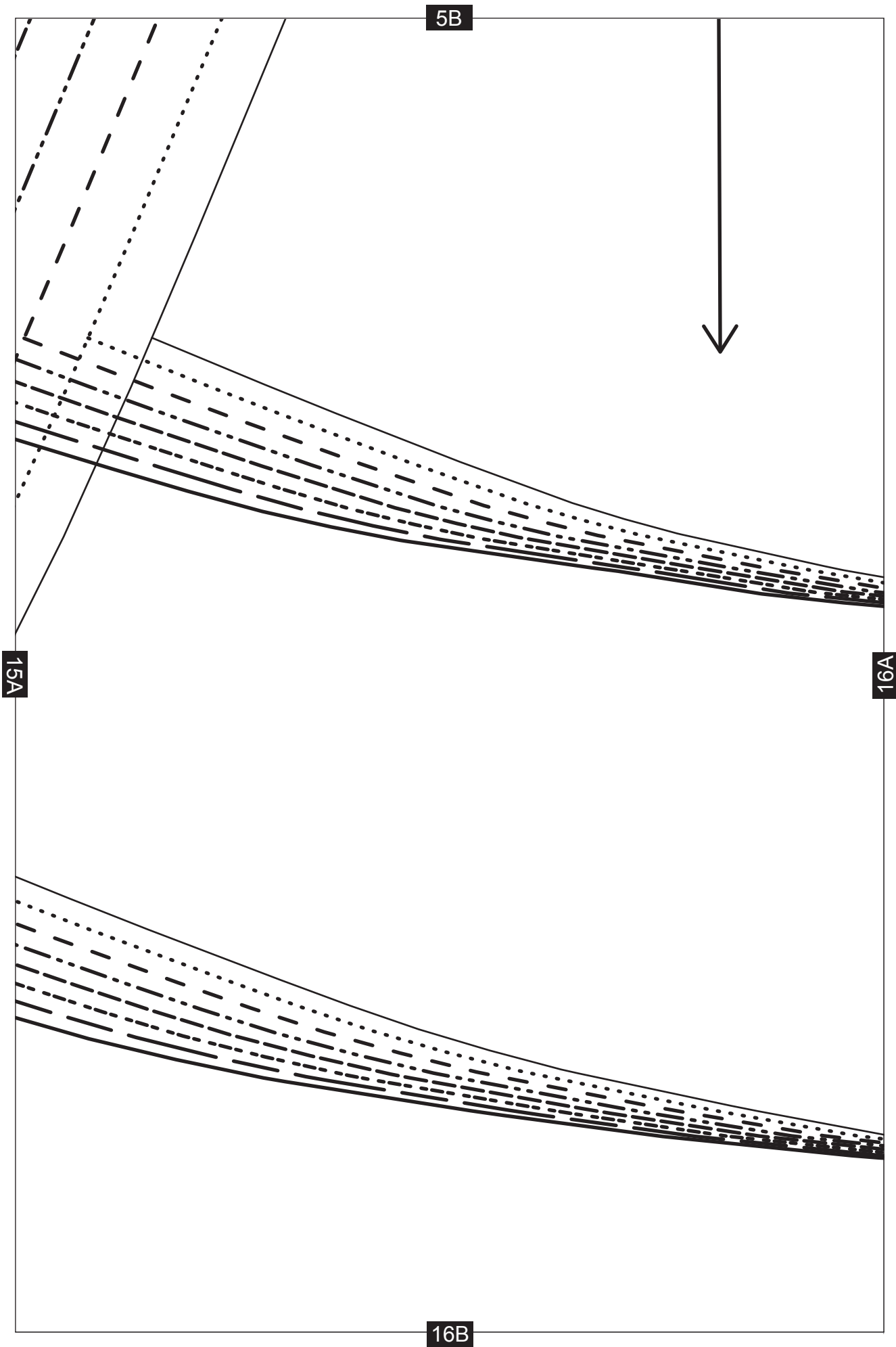
4B

14A

15A

15B





6B

8

VARIATION: ROMPER VERSION CUTTING LINE

16A

17A

17B

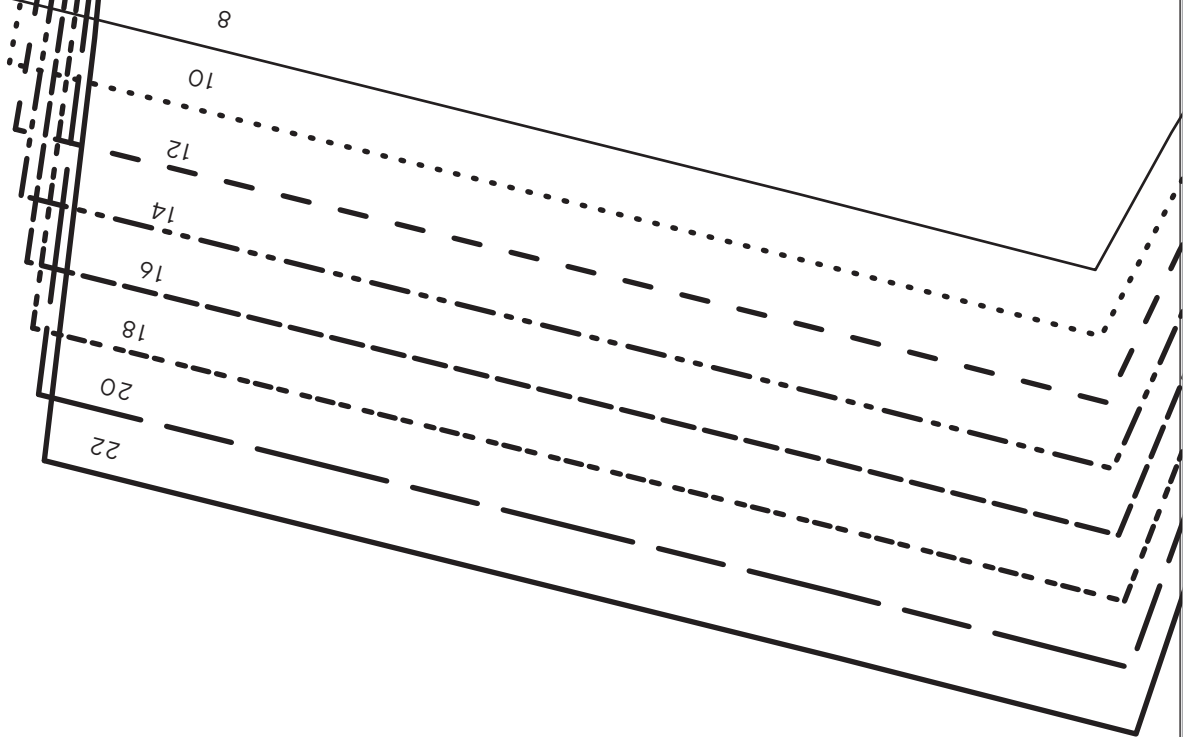
7B



Romper

FRONT LEG - CUT 2

18A



17A

18B

GRAINLINE

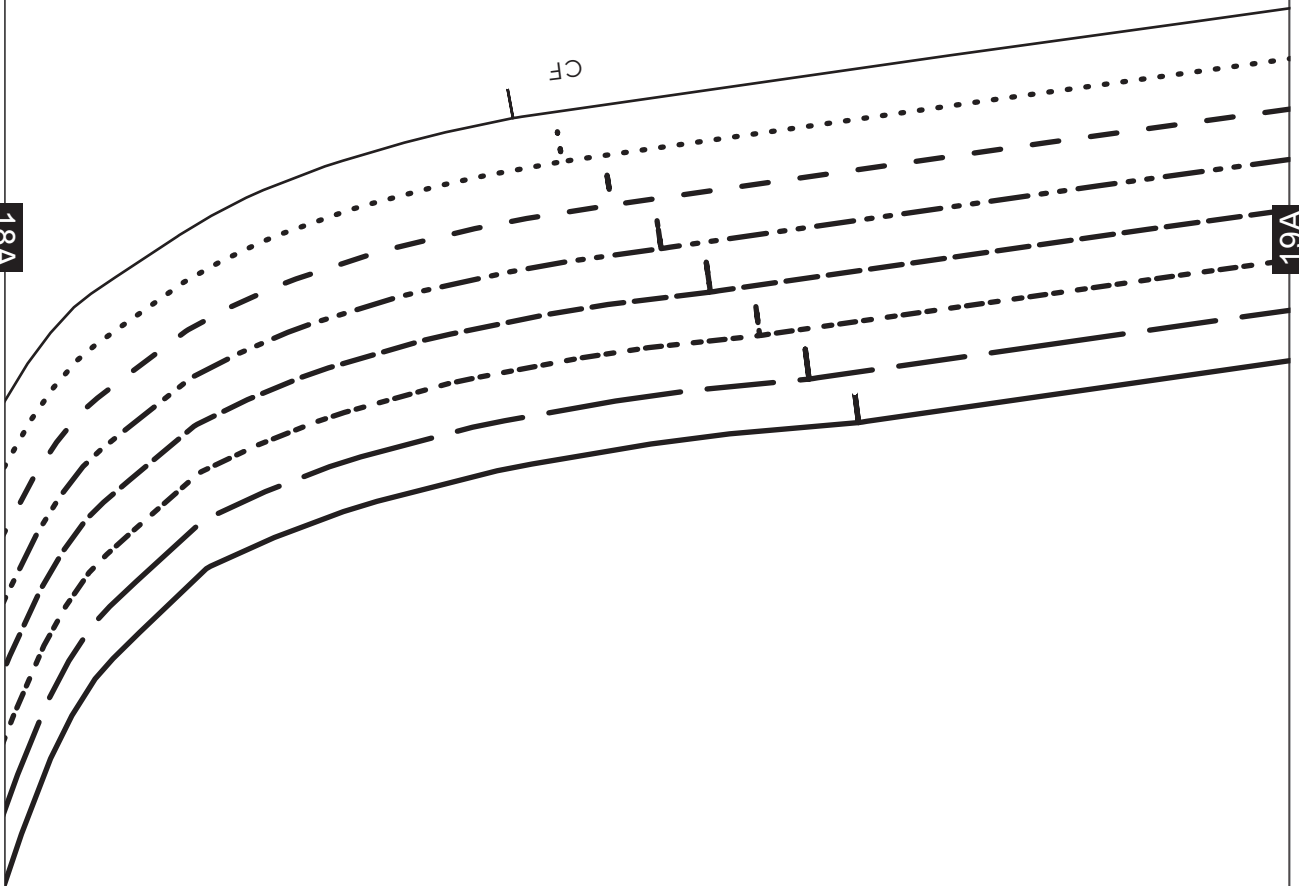
8B

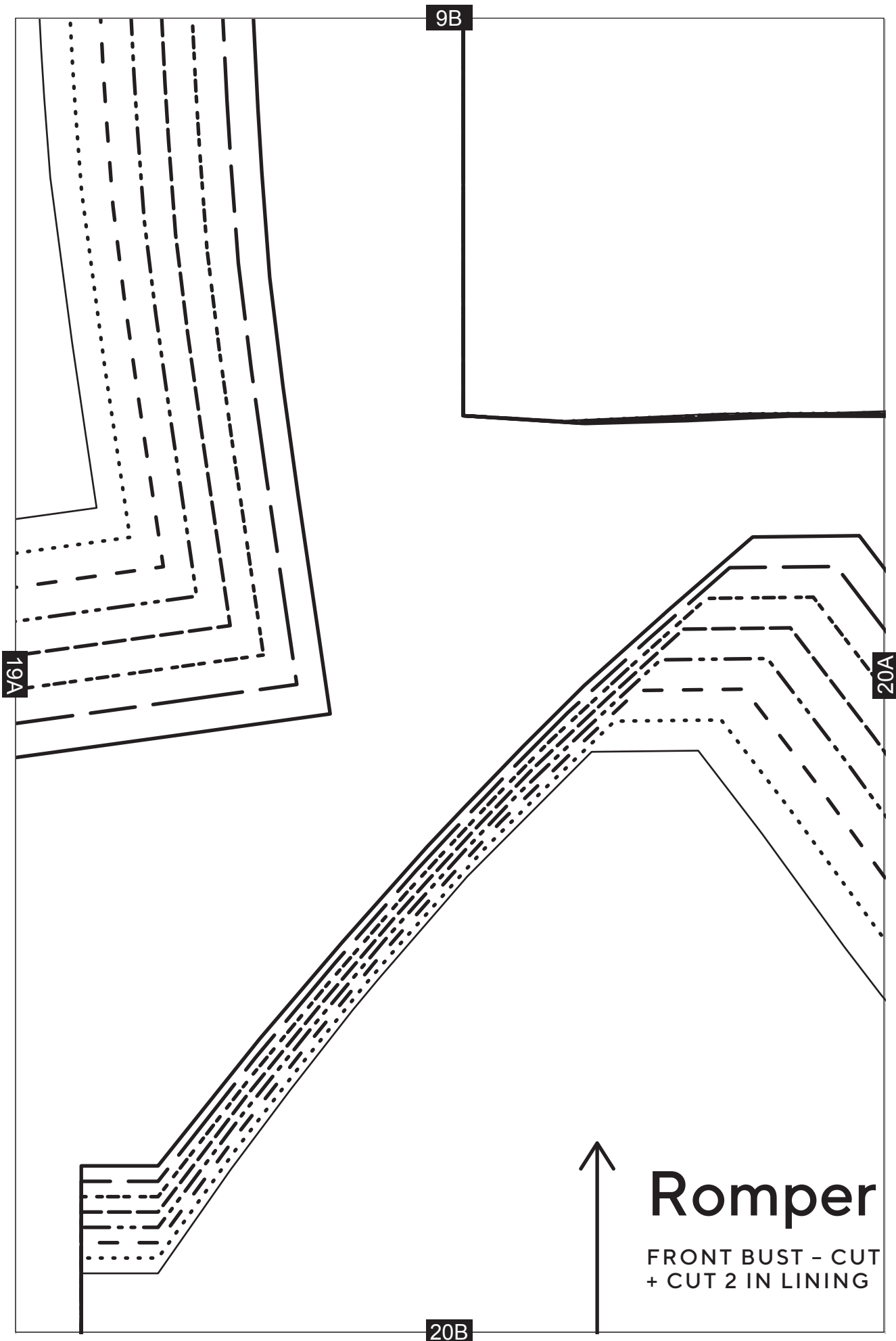
18A

CF

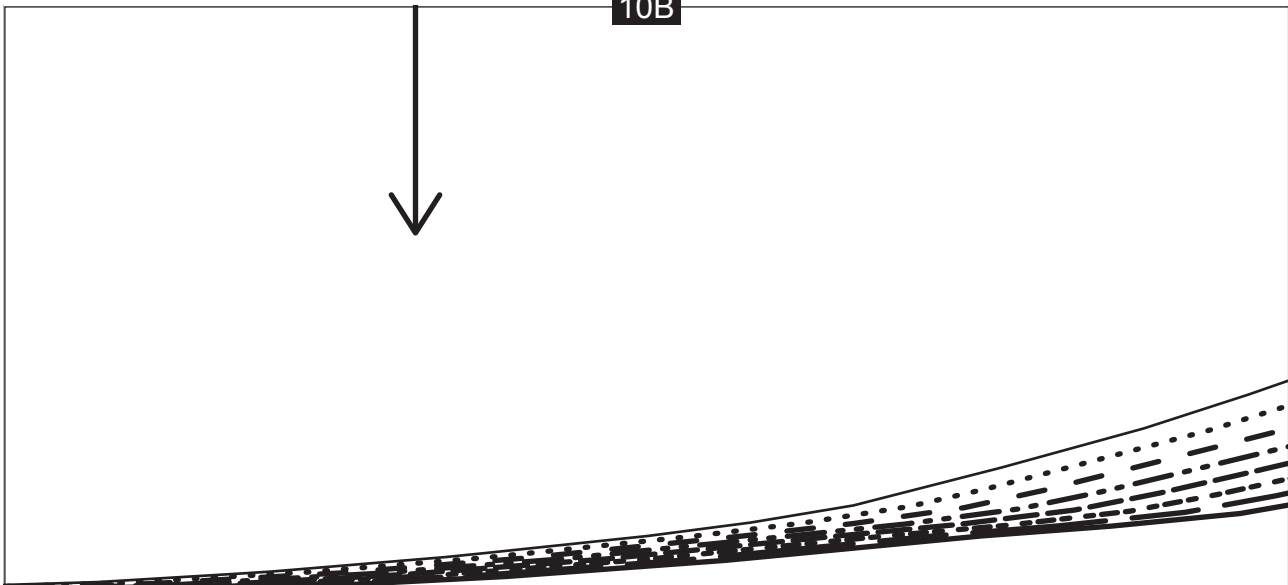
19A

19B



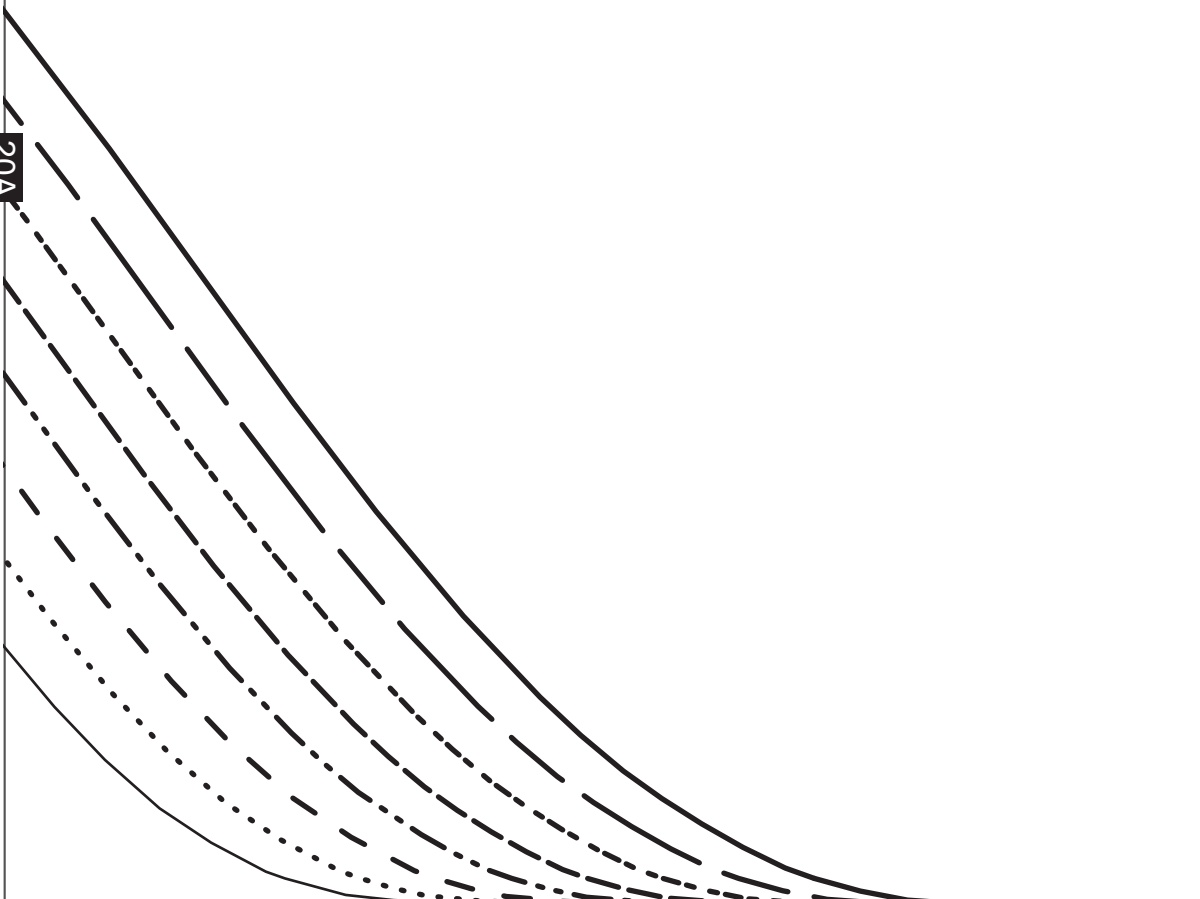


10B



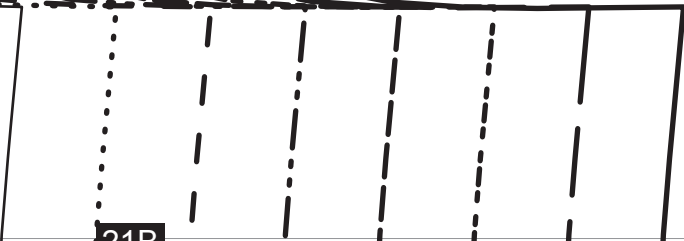
20A

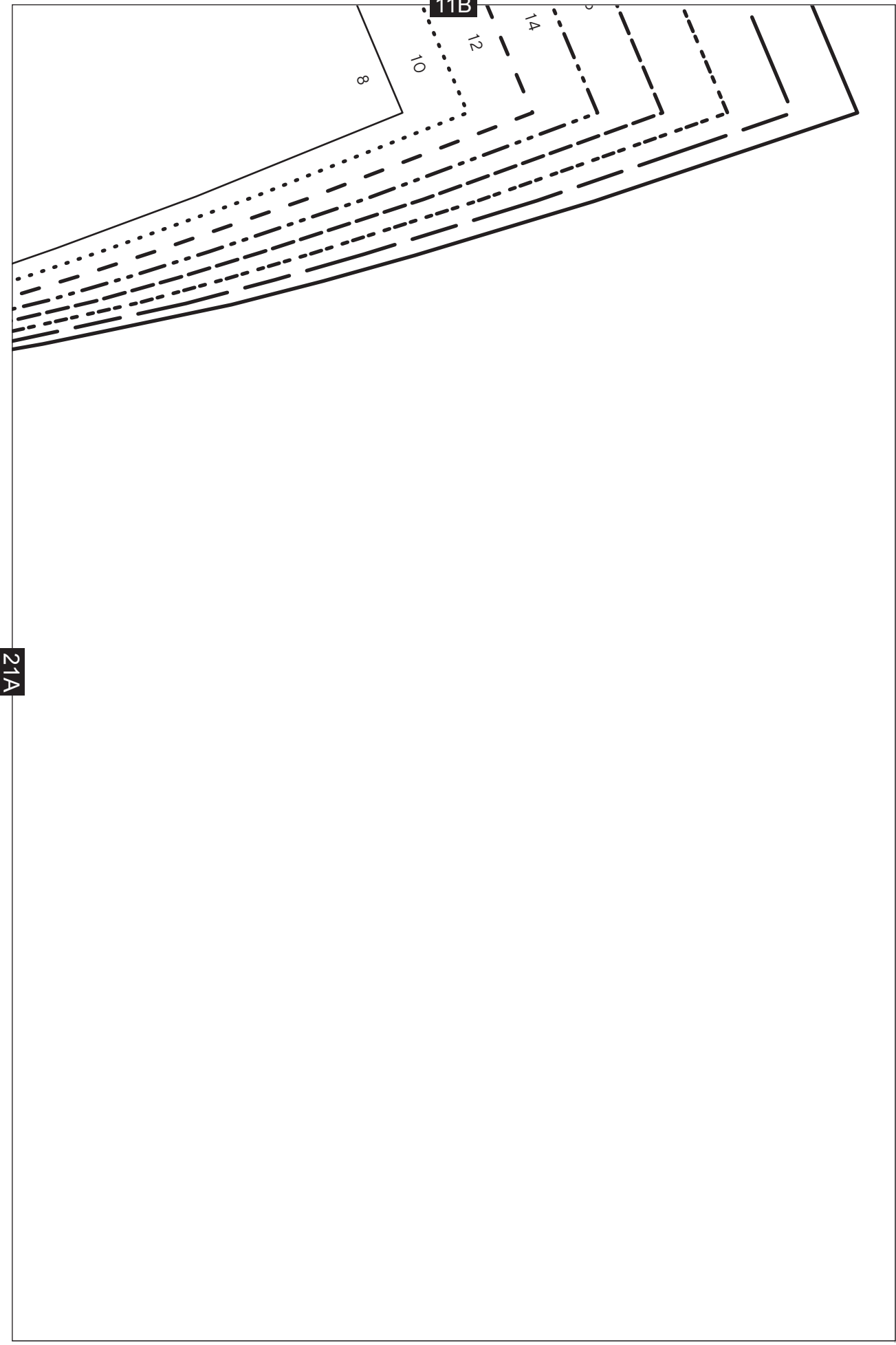
21A



2 IN MAIN FABRIC

21B





11B

8

10

12

14

21A

13B

Romper

LEG CUFF - CUT 2 ON FOLD

8

Romper

WAISTBAND FRONT - CUT 2

23A

24A

8

Romper

WAISTBAND BACK - CUT 2

14B



GRAINLINE

8
••• 10
12
14
16
18
20
22



8
••• 10
12
14
16
18
20
22



8
••• 10
12
14
16
18
20
22

8
••• 10
12
14
16
18
20
22

24A

25A

15B

SIDE SEAM



CUT ON FOLD



25A

26A

16B



27A

16



18



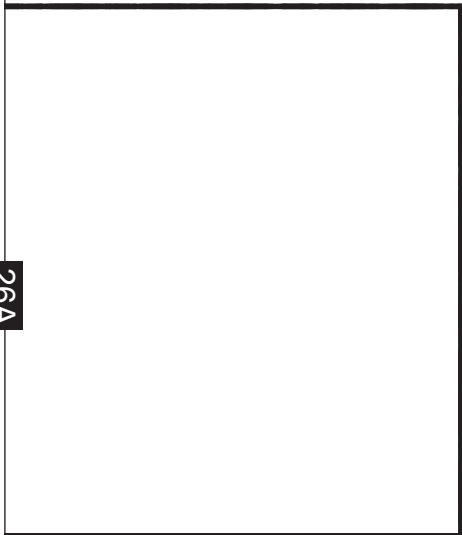
20



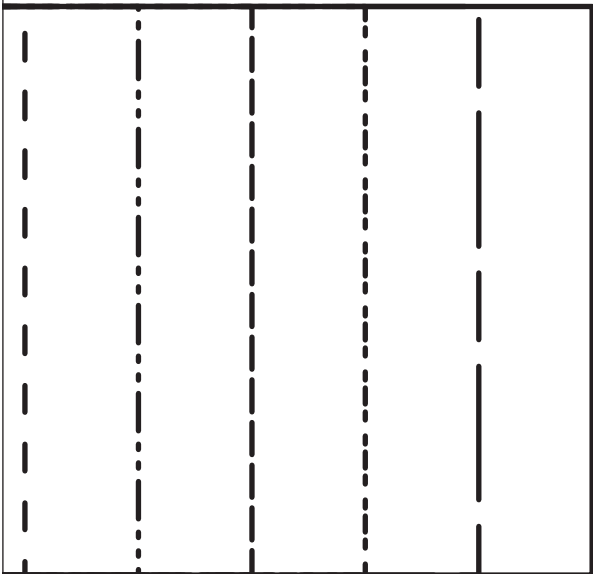
22



26A



17B



27A

14

12

10

8

Romper

BINDING - CUT 1

28A

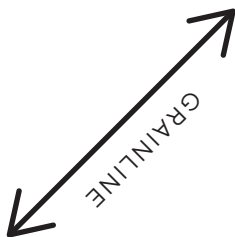
Romper

ROULEAU STRAP - CUT 2

18B

28A

29A



19B

30A

29A



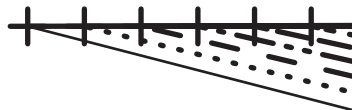
22	—
20	- - - -
18	- - - -
16	- - - -
14	- - - -
12	· · · ·
10	· · · ·
8	

20B

GRAINLINE

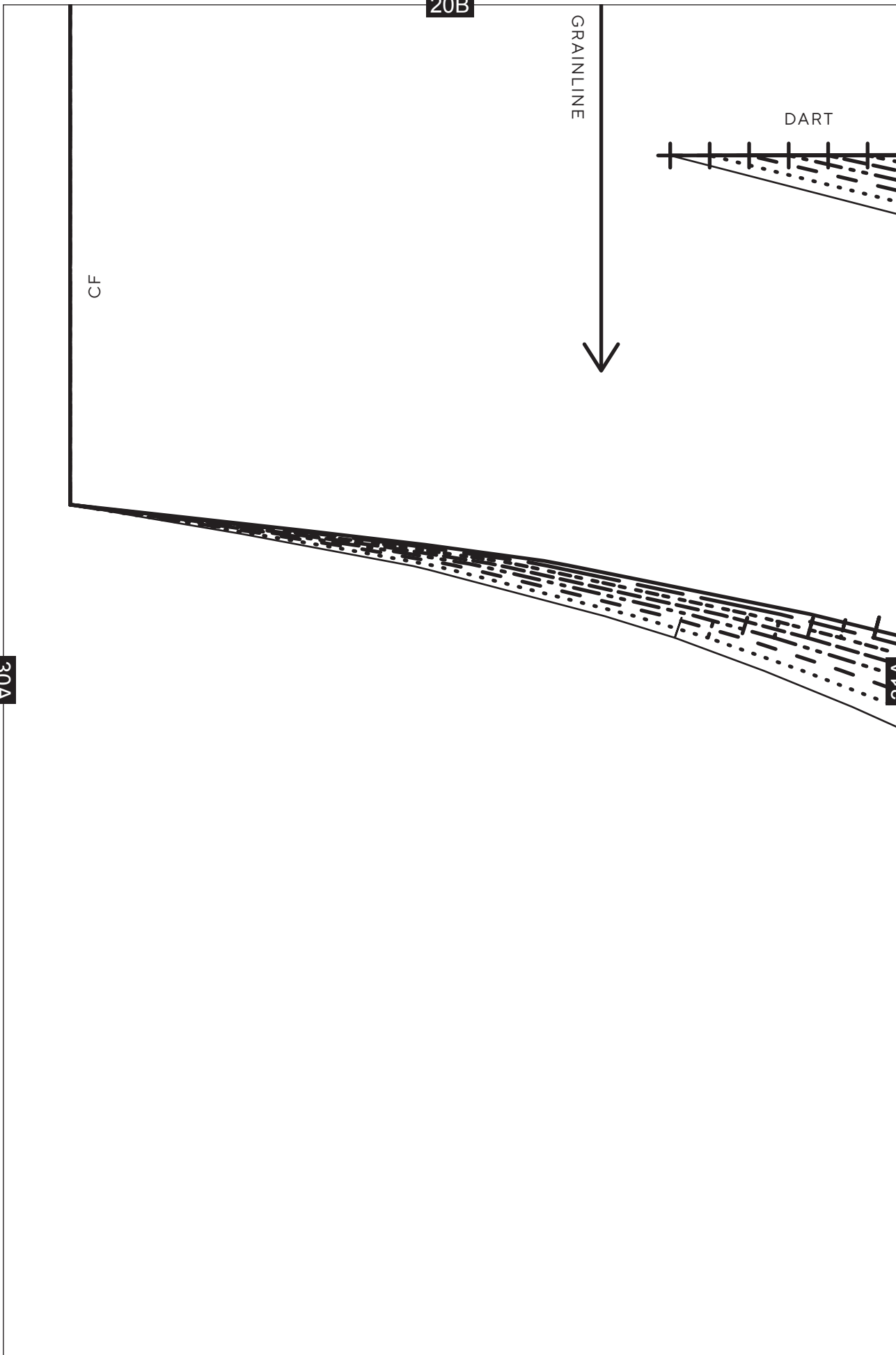
DART

CF



30A

31A



21B

SIDE SEAM

31A

8

10

12

14

16

18

20

22

